

POWRMATIC



PRODUCT QR CODE

Decarbonising Air Conditioning Solutions

Vision Range

Packaged Heat Pump Air Conditioner



www.powrmatic.co.uk

*Energy Efficiency.
Enhanced EPC Performance.*





The air conditioner without an outdoor unit.

Together for a **greener tomorrow.**

*We understand the importance of reducing carbon footprints and achieving net zero goals. The Vision packaged heat pump air conditioners harness renewable energy, offering exceptional performance with minimal environmental impact. **With over 400% efficiency**, these units provide significant utility bill savings, making them an economical and eco-friendly choice.*

The Powrmatic Vision series redefines climate control with stylish, compact, and highly efficient air conditioning units that require no outdoor condenser. Designed to blend seamlessly into any interior, Vision delivers exceptional performance without compromising aesthetics or space.

Whether you're cooling a compact guest room or heating a spacious office suite, the Powrmatic Vision range delivers the flexibility you need. With outputs from **2.3kW to 4.1kW**, every model is engineered to provide efficient, quiet comfort tailored to room size and usage. From residential spaces such as care homes or hotels to high-demand office environments, Vision adapts to your needs without compromise.

Models Available

- Vision 2.3kW
- Vision 3.1kW (additional 1kW heater model available)
- Vision 4.1kW
- Vision VertiCool
- Vision Horizontal

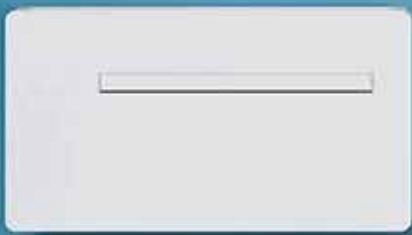
Vision's through-the-wall ducted system removes the need for complex pipework and external units, enabling a swift, non-invasive, and cost-effective installation. Ideal for new builds, refurbishments, and retrofits, it also requires no F-Gas certification—further reducing installation costs and simplifying compliance.

With Wi-Fi connectivity as standard, every Vision model gives you the power to control your environment remotely via smartphone or integrate with wider smart building management systems.

• No-F-Gas Certificate Required •

Applications

- Offices
- Hotels
- Care Homes
- Modular Buildings
- Garden Rooms
- Residential High Rise
- Portable Buildings
- Apartments
- Flats
- Listed Buildings





Minimalist style.
Maximum climate control.



Models Available

Vision 2.3

The Vision 2.3 is a compact a/c solution for when space is at a premium. The Compact measures just **810mm** wide and fits narrow spaces or under windows for constraint areas. It's the first fixed double duct air conditioner to use **R290** (propane) gas giving an impressive cooling & heating capacity with a low environmental impact

Typical Coverage Area (m ²)	15-20
COP	3.15
Refrigerant	R290



Vision 3.1

The Vision 3.1 is the most popular unit and available in 3.1kW along with a 3.1DWH which has an additional heating boost via a electrical heater that intervenes automatically when outdoor temperatures become extremely low. Measuring only 1010mm wide and slim profile its the perfect all round climate control solution.

Typical Coverage Area (m ²)	20-25
COP	3.28
Refrigerant	R32



Vision 3.6

The Vision 3.6 boosts an impressive 3.6kW output for heating and cooling. The 3.6 is the perfect solution for larger hotel rooms, care homes and open plan offices. the 3.6 still retains the standard unit size of 1010mm wide but requires 202mm wall holes for installation.

Typical Coverage Area (m ²)	25-30
COP	3.12
Refrigerant	R32



Vision 4.1

The Vision 4.1 is the most powerful model in the range, delivering high-capacity cooling and heating without an external condenser. It features vertical wall installation, eco-friendly R32 refrigerant, and dual axial fans for strong airflow and quiet performance. Compact and sleek, it's perfect for larger residential and commercial spaces.

Typical Coverage Area (m ²)	30-40
COP	2.99
Refrigerant	R32



Vision VertiCool

The Vision VertiCool 3.1kW is a stylish vertical approach that can be installed in areas between windows, or in room corners making it the perfect alternative for those rooms where space and access to an external low or high wall is limited. The VertiCool is installed the same as the standard unit with an impressive depth of only 185mm allow it to integrate seamlessly into any room.

Typical Coverage Area (m ²)	20-25
COP	3.15
Refrigerant	R32



Vision Horizontal

The Vision Horizontal is a compact ceiling-mounted air conditioner requiring no external unit. Using eco-friendly R32 refrigerant and measuring just 25.5 cm high, it's perfect for spaces where wall units aren't an option. It's integrated electric heater offers adjustable 900W or 1800W settings for year-round comfort.

Typical Coverage Area (m ²)	20-25
COP	3.16
Refrigerant	R32



Saving energy & costs for your building.



A+ Efficient Conditioning

Achieve efficiencies over 400% with minimal input (0.72 kW) compared to output (3.1 kW), leading to substantial utility bill savings. This high efficiency reduces overall energy consumption, making it both economical and sustainable.



Go Carbon Neutral

Operate exclusively on electricity and renewable sources like solar or wind power, ensuring zero direct carbon emissions. This aligns them perfectly with carbon neutrality goals, reducing reliance on fossil fuels and supporting sustainable practices for buildings aiming to minimise environmental impact.



Decarbonise Your Space

Ideal for buildings aiming to achieve net zero goals and improve EPC ratings. They significantly reduce carbon emissions through high efficiency and electric power reliance, enhancing property value and compliance with sustainability standards.



Eco-Friendly Refrigerant

Utilises propane, a natural refrigerant with a low GWP of 3. R290 is non-toxic, has no ozone depletion potential, and supports sustainability goals by reducing greenhouse gas emissions while enhancing heat pump performance.

Low-costs with rapid project completion.



Low Installation Costs

Eliminate the need for costly refrigerant pipework and certified F-gas engineers. General builders, electricians, or maintenance teams can install them without specialised certification, reducing complexity and installation expenses.



Quick Install = Zero Downtime

Install in under 4 hours with no disruption to room occupancy—ideal for retrofits and new builds alike. This fast, non-invasive process accelerates project timelines and is perfectly suited to hospitality, healthcare, education, and residential environments.”




No Outdoor Condenser

Eliminates unsightly outdoor units, maintaining building aesthetics and adhering to urban restrictions on external modification making them ideal for diverse installation scenarios without compromising architectural integrity.



Minimal Maintenance

Packaged heat pumps have fewer moving parts than most traditional systems. This reduces the chances of mechanical failures and the need for regular maintenance. As a result, downtime for servicing can be kept to a minimum, which can result in significant savings over time.



No pipes.
No external units.
No long installations.
No hassle.

Vision Replaces Fuss.

Unlike traditional VRF systems that rely on bulky outdoor condensers, intrusive pipework, and complex installation, the Powrmatic Vision range delivers high-performance heating and cooling with zero compromise on aesthetics. Its sleek, through-the-wall design removes the need for external units or refrigerant lines—preserving your building's appearance, streamlining installation, and **eliminating the need for F-Gas certification.**



**External
Condenser**



**Floors
Affected**



**Room
Downtime**



**Refrigerant
Pipework**



**Hour Installation
Time**

VRF/Split Installation

Slow and invasive. Requires large outdoor condensers and long refrigerant pipe runs. Often involves removing floors or ceilings and altering the structure. Installations take days or weeks, increasing cost, reducing revenue and heavily impacting the building's appearance.



• No-F-Gas Certificate Required for Installation •

Vision Installation

Quick and non-invasive. The unit mounts to the wall or ceiling with just two small external ducts. No outdoor condenser, complex pipework, or structural disruption. Most installs finish in a day, keeping costs low and preserving the building's interior and exterior aesthetics. All work is completed from inside the room—no need for external scaffolding or heavy equipment.



One system.
Endless possibilities.





Through the wall installation.

Each Vision unit benefits from simple installation that requires no down-time or loss of revenue for building owners whilst also reducing the re-decoration costs after the use of cable runs and external condensers after the installation. With no F-Gas certificate requirement this significantly reduces the overall installations costs.

The Vision range is the perfect solution for retro-fitting and can be the ideal replacement in many rooms offering both heating and cooling. Each unit is supplied with a 13A standard BS plug top.

Just see the easy 4 steps guide below.



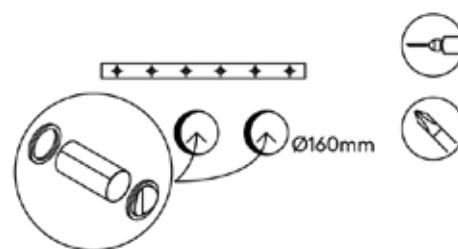
Vision 4.1 Installation

1



Mount the provided paper template level to the desired wall and mark the 6 x fixing bracket holes, 2 x diameter duct holes and the condensate hole.

2



Fix the supporting bracket to the wall, insert the plastic lining sleeves through the duct holes. Attach the plastic indoor flanges and then fix the self folding outdoor grilles from inside the building.

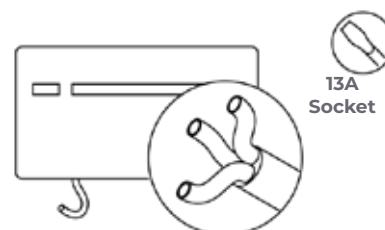
(Note: No Plastic lining sleeves for installation is supplied or required for the Vision 4.1kW unit due to the duct fan size)

3



Mount the unit on the wall onto the bracket checking for the correct alignment.

4



Connect the unit to your standard 13A plug socket and insert the condensate drain pipe through the back.

Climate control your way.

The unit can be controller 4 different ways depending on your requirements. Besides the newly enlarged remote control, the on board control allows the user to set any possible function, including a “lock” position to avoid un-proper use and weekly scheduling. The mobile app allows the management of the unit from remote positions through WIFI such as a hotel reception desk controlling multiple units from one location. There is also the ability to have a individual hard-wired controller which can be mounted near the unit if required.



Integrated Touch Screen



**Remote Touch Screen
(hard-wired)**



Remote Control



IOS or Android App



(Hard wired touch screen controller)



Available on the
App Store



ANDROID APP ON
Google Play

The Vision WiFi app lets you control multiple units from your smartphone or tablet. Easily adjust temperature, fan speed, and airflow direction remotely. In hotels, reception can manage room settings based on occupancy—pre-conditioning rooms before guests arrive and switching units off when vacant to save energy. Owners can also set weekly schedules for effortless, efficient control.

High performance. Low environmental impact.

As buildings move toward ambitious Net Zero Carbon goals, energy-efficient climate control has never been more essential. The Powrmatic Vision range has been engineered to meet the demands of modern sustainability without compromising on performance or flexibility.

Ultra-Efficient Operation

The Vision delivers over three times more heating energy than it consumes. For cooling, it requires minimal electrical input while maintaining powerful, consistent performance.



Lower Energy. Lower Emissions.

- Lower running costs reduce operational expenditure.
- Reduced carbon emissions support corporate sustainability and government Net Zero targets.
- No external condenser avoids the embodied carbon and visual impact of larger split or VRF systems.

EPC Rating Advantage

For buildings striving to meet net zero goals and improve their Energy Performance Certificate (EPC) ratings, a packaged heat pump air conditioner is an excellent choice. Its high efficiency and reliance on electric power contribute to significant reductions in carbon emissions, aiding in the decarbonization of buildings. Improved EPC ratings can enhance property values and appeal to environmentally conscious tenants and buyers, ensuring compliance with future regulatory requirements and sustainability standards.

Example Running Cost

Let's take a 20 bedroom hotel based on the following:

20

Units

7

Days Per Weeks

8

Hour Daily Run Time

£0.245

Cost per / kWh

Single daily energy consumption for 8 hours
5.76kWh

Total daily energy consumption for 20 units
115.2kWh

Daily Running Costs of 20 units

£28.22

Yearly Running Costs of 20 Units

£10,293

A

B

C

D

E

F

G

A

Save up to

64%

in annual running costs compared to 2kW electric heater!

Sandman Signature Hotel

During its refurbishment, the Sandman Signature Hotel in Sheffield installed Powrmatic Vision units—compact, condenser-free HVAC systems—providing efficient in-room climate control while preserving space and exterior aesthetics.



Background

During a comprehensive refurbishment, the hotel aimed to enhance guest comfort by upgrading its heating and cooling systems. Challenges included preserving balcony views by avoiding external condensers and accommodating units within rooms that had limited wall space.

Solution

Powrmatic provided a combination of Vision 3.1kW and compact 2.3kW units, ideal for the spatial constraints of the rooms. These units, which require no external condensers, were installed across an entire floor in Phase One. Each unit featured a sleek wall controller, ensuring both aesthetic appeal and efficient climate control.

Result

The initial phase delivered modernised rooms with discreet, effective climate control, enhancing guest comfort. Its success prompted plans to equip remaining floors with Vision units, showcasing how innovative HVAC solutions meet both functional and design needs in hospitality.

Linc Cymru Care Home

73 Powrmatic Vision units were installed in a modular-built assisted care home in South Wales, providing efficient cooling and heating to every guest room. The wall-mounted packaged air conditioning and heat pump units were selected for their compact design, energy efficiency, and automatic climate control, meeting the specific needs of this innovative Cardiff care home project.



Background

Planning restrictions prevented external condensers, pipework, or brackets. Powrmatic supplied Vision wall-mounted packaged heat pump units for automatic cooling and heating, meeting Cool Touch safety requirements for residents.

Solution

Powrmatic supplied Vision 73 Vision 2.3 DW and 3.1 DW units were installed across various apartment layouts. Each unit required only a 13A socket and two rear duct holes. Installers mounted four units per day, completing the project in just over three weeks.

Result

The Vision system now delivers automatic 24/7 heating and cooling with a COP of 3.2, low energy use, and WiFi control—all without altering the building's modern exterior. As an LST (Low Surface Temperature) product, Vision also meets care home safety standards by ensuring the unit surface

The Hub Gibraltar Hotel

An impressive 143 packaged heat pump air conditioning units were installed across various studio apartments at The Hub in Gibraltar to provide low-cost cooling in the summer and heating in the winter providing full automatic cool and heat 24/7, in a very challenging climate.



Background

The Hub's architects needed a climate control solution that wouldn't affect the building's exterior or breach planning rules—ruling out traditional split systems. For 143 studio apartments, they chose the Powrmatic Vision 3.1 DW for efficient cooling and heating without external condensers.

Solution

Powrmatic supplied Vision units with bespoke anti-rain cowls to protect against harsh winds and rain. Installation was simple, requiring just two contractors. A 13A socket was installed near each unit, with pre-drilled duct holes and no complex wiring or external scaffolding needed.

Result

The Vision units now provide fully automatic 24/7 cooling and heating, controlled by onboard, remote, and WiFi systems. Residents can adjust settings remotely, maintaining comfort and reducing energy use—all while preserving the building's aesthetic and complying with strict

Norton Park Hotel

Norton Park Hotel installed 48 Vision 3.1 units, offering efficient heating and cooling with fast installation and WiFi control. The condenserless design preserved the building's aesthetics while enabling simple, low-maintenance climate control.



Background

Norton Park Hotel, a luxury 166-room property, needed a fast, discreet air conditioning solution that would blend with its contemporary design and historic architecture. Building on previous success with Powrmatic, they selected the Vision 3.1 units for their ease of installation and WiFi control.

Solution

48 Vision 3.1 units were installed across the hotel. Selected for their compact design, fast installation, and strong heating and cooling capacity, the units also offered full WiFi control, allowing reception to manage the system from a single device.

Result

The Vision 3.1 units were installed quickly without outdoor condensers, minimising disruption. The hotel reported low maintenance and praised the remote control functionality. More units will be added over the next two years.

Whittlebury Hall Hotel

Whittlebury Hall Hotel installed 55 Vision 2.3 condenserless heat pump units to meet fast-track cooling and heating needs without compromising the building's aesthetic. The quiet, efficient units were installed without disrupting guests and will be extended to a further 159 rooms.



Background

Whittlebury Hall Hotel required a fast-track air conditioning solution for its suites and rooms ahead of the busy Silverstone Grand Prix season. External condensers were not permitted due to the building's design and aesthetic requirements.

Solution

55 Vision 2.3 condenserless heat pump units were installed in executive suites and club rooms. Units were selected for their compact design, quiet operation, and ease of installation, which allowed work to be completed without disturbing guests. Only two small external duct holes were required per room.

Result

The Vision units now provide quiet, energy-efficient cooling and heating with onboard touchscreen controls. The design preserved the hotel's exterior while delivering Class A energy efficiency. A further 159 rooms are scheduled for upgrade using the same system.

Nottingham Belfry Hotel



QHotels Nottingham Belfry upgraded 45 guest rooms with Powrmatic Vision 2.3 condenserless air-conditioning units, improving comfort while maintaining a sleek, modern aesthetic.



Background

As part of a major refurbishment, Nottingham Belfry Hotel sought a compact, modern climate control solution that avoided external alterations and complemented the hotel's updated interiors. The existing system was outdated and inefficient.

Solution

Powrmatic supplied Vision 2.3 units—wall-mounted, all-in-one systems that provide both heating and cooling without the need for external condensers. Their compact design and quiet operation made them ideal for hotel use.

Result

The installation was completed with minimal disruption, delivering immediate improvements in room comfort and energy efficiency. Following the success of the first phase, QHotels plans to expand the rollout across additional rooms and properties.

Indoor View





Outdoor View

(Shown with fitted internal Nebuliser)

Technical Specification

		UM	Vision 2.3	Vision 3.1	Vision 3.1/H	Vision 3.6	Vision 4.1	Vision Verticool	Vision Horizontal
Cooling Performance	Max Cooling Capacity Dual Power (1)	kW	2.35	3.1	3.1	3.5	4.1	2.58	3.05
	Nominal Cooling Power (1)	kW	1.73	2.33	2.33	2.87	3.31	2.29	2.25
	Min Cooling Capacity (1)	kW	0.7	0.92	0.92	1.4	1.4	0.81	1.1
	Dehumidification Capacity	L/h	0.7	0.9	0.9	1.2	1.5	0.73	0.9
	Total Input Power Cooling	kW	0.57	0.72	0.72	1.04	1.21	0.73	0.7
	Energy efficiency class (Dir. 626/2011) (2)		A	A+	A+	A	A	A+	A
	EER		3.01	3.25	3.25	2.74	2.74	3.1	3.21
	SEER		4.6	4.6	4.6	4.1	4.2	4.1	4.1
	Energy efficiency class (EN 14825) (3)		B	B	B	C	C	B	A
Heating Performance	Max Heat Output Dual Power (4)	kW	2.4	3.05	3.05	3.5	4.05	2.65	3
	Nominal Heat Power (4)	kW	1.71	2.31	2.31	2.75	3.52	2.36	2.21
	Electric Heater Additional Power	kW	-	-	0.90/1.80	-	0.90/1.80	-	0.90/1.80
	Min Heat Output (4)	kW	0.75	0.79	0.79	1.35	1.35	0.80	0.94
	Total Absorbed Power (4)	kW	0.54	0.71	0.71	0.88	1.18	0.66	0.70
	COP		3.15	3.28	3.28	3.12	2.99	3.60	3.16
	SCOP		3.70	3.80	-	3.70	3.50	-	-
	Energy efficiency class (Dir. 626/2011) (2)		A	A	A	A	B	A+	A
	Energy efficiency class (EN 14825) (3)		A	A	A	A	A	A+	A
Electrical Data	Total Input Power Heating	kW	0.9	1.06	2.86	1.45	1.5 (3.30) (8)	0.98	2.05
	Max Absorbed Current (A)	A	3.9	4.6	12.4	6.3	6.52 (14.30) (8)	4.30	9
	Voltage	V/ph/Hz	230/1/50						
General Features	Max Indoor Airflow	m ³ /h	360	400	400	450	500	400	420
	Max External Airflow	m ³ /h	430	480	480	550	750	480	540
	Avg Indoor Airflow	m ³ /h	300	320	320	350	400	320	350
	Avg External Airflow	m ³ /h	360	390	390	460	550	390	450
	Min Indoor Airflow	m ³ /h	240	270	270	300	300	270	280
	Min External Airflow	m ³ /h	320	340	340	400	400	340	480
	Compressor type		Rotary - DC Inverter						
Sound Data	Nominal Sound Pressure (7)	dB(A)	39	41	41	43	46	43 (5)	-
	Min Sound Pressure (7)	dB(A)	27	27	27	29	30	29 (5)	-
Room-side sound levels	Sound power transmitted to the structure L _w								62
	Average sound pressure at 1 m L _p (7)		N/A						48
	Average sound pressure at 3 m L _p (7)								40
Refrigerant Gas Data	Refrigerant Type		R290	R32	R32	R32	R32	R32	R32
	Refrigerant Charge	kg	0.14	0.5	0.5	0.5	0.5	0.57	0.5
Dimensions / Weights	Width	mm	810	1010	1010	1010	1010	580	1093
	Height	mm	549	549	549	549	549	1330	314
	Depth	mm	165	165	165	165	165	205	843
	Empty Weight	kg	38	41	41	41	41	63	69
	Wall Hole Diameter	mm	162	162	162	202	202	202	162
	Wall Hole Spacing	mm	293	293	293	293	293	293	-

1) Outdoor air temperature 35°C; relative humidity 41%. Ambient air temperature 27°C; relative humidity 47%. Performance according to EN 14511
 (2) Energy classification according to Directive 626/2011 - Valid for fiscal deductions.
 (3) Energy classification according to Directive EN 14825:2022.
 (4) Outdoor air temperature 7°C; relative humidity 87% / Ambient temperature 20°C, relative humidity 59% / Performance according to EN 14511
 (5) Efficiency according to EN 13141-7; Indoor temperature 20°C - Indoor humidity 28% - Outdoor temperature 7°C - Outdoor humidity 72%.
 (6) 3 manual speeds plus automatic speed plus Boost.
 (7) Sound pressure on the internal side in a semi-anechoic chamber at a distance of 2 meters.
 (8) Power and current with additional electric element.

Operating limits:
 Min. cooling temperature T_{environment} 18°C / T_{external} -5°C
 Max. cooling temperature T_{environment} 32°C / T_{external} 43°C
 Min. heating temperature T_{environment} 5°C / T_{external} -15°C (-25°C for ELEC versions)
 Max. heating temperature T_{environment} 25°C / T_{external} 18°C

Accessories & Ancilleries

Digital Hard Wired Controller



The digital hard wired Smart Touch wall controllers offer simplified control with a modern touch interface, allowing users to easily manage speed, seasonal settings, temperature set points, and ventilation levels for year-round comfort. Available in white or black.

Wi-Fi Enabled Controller

- PI Logic
- Touch interface
- Controls up to 16 units
- Wi-Fi Connection
- Accessory kit for recessed boxes

BMS Enabled Controller

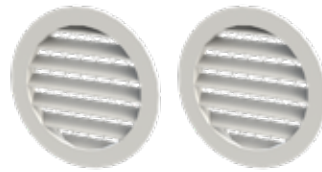
- PI Logic
- Touch interface
- Controls up to 16 units
- RS485 Modbus port for BMS integration
- Accessory kit for recessed boxes

Standard External Grills



Supplied as standard. Vision inlet and outlet grills (set of two) with fixings. Painted RAL 9003 white. Custom colour painting available with MOQ of 50.

Flat Aluminum Grills



Fixed fin aluminum grills, supplied on request. Ideal for aesthetic upgrades or painting.

(Optional accessory)

Remote Control



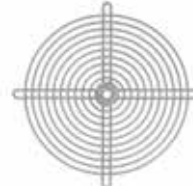
The Remote Controller comes as standard, offering easy control of airflow direction, fan speed, and timer settings. It also features a night well-being key for enhanced comfort during sleep. **(spare item)**

Rain Cowls



Protects external wall holes from rain and wind. Supplied as a pair, painted RAL 9003 white. **(Optional accessory)**

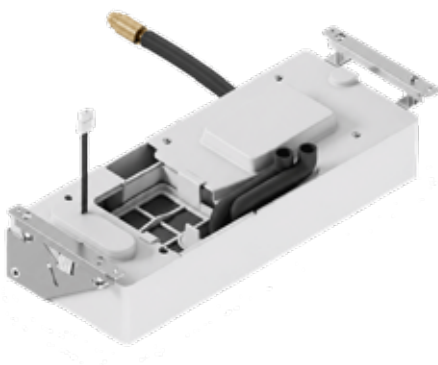
Anti Insect Grills



Prevents insects or small debris from entering external openings. Kit includes 2 mesh discs, 2 metal wire grills, and fixings. **(Optional accessory)**

Condensate Nebuliser

Eliminates the need for unsightly external condensate drain pipes. Condensate is discharged through a discreet, low-profile outlet nozzle, preserving the aesthetic appearance of the building façade.



Side Discharge Option (Left or right side)

Designed for installations where rear-wall discharge is restricted, the side discharge kit redirects airflow through the left or right side of the unit. This enhances installation flexibility and allows the Vision unit to be deployed in a wider range of applications.



POWRMATIC

Working together to decarbonise your building through efficient HVAC technologies.

Powrmatic is a trusted leader in the manufacture and supply of advanced HVAC solutions. Our diverse portfolio includes multi-energy heating and cooling systems, innovative air movement technologies, advanced natural and smoke ventilation, and air conditioning solutions. We work closely with building design specialists, architects, consultants, and HVAC professionals to deliver sustainable, high-performance systems that ensure optimal comfort, safety, and energy efficiency for industrial, commercial, and institutional environments.

Heating

Tailored heating systems for industrial and commercial sectors, crafted to meet the specific and requirements for any application. Our heating solutions combine energy efficiency, sustainability, and dependable performance to deliver optimal results and ensure long-lasting value.

Ventilation

Advanced smoke and natural ventilation systems, designed for life safety and building protection in commercial, industrial, and institutional environments. Our solutions ensure compliance with safety standards, delivering efficient and reliable performance.

Air Conditioning

Innovative packaged heat pump air conditioning systems, ideal for hotels, care homes, and office spaces. Our systems provide reliable, energy-efficient climate control, enhancing comfort while reducing energy consumption and supporting sustainable building practices.

UK Office

Hort Bridge
Imminster
Somerset
TA19 9PS

+44 (0) 1460 53535
info@powrmatic.co.uk
www.powrmatic.co.uk

Ireland Office

Powrmatic Ireland
45 Broomhill Close
Tallaght
Dublin 24

tel: +353 (0) 1452 1533
info@powrmatic.ie
www.powrmatic.ie



Powrmatic pursues a policy of continuous improvement in both design and performance of its products and therefore reserves the right to change, amend or vary specifications without notice. Whilst the details contained herein are believed to be correct they do not form the basis of any contract and interested parties should contact the Company to confirm whether any material alterations have been made since publication of this brochure.