

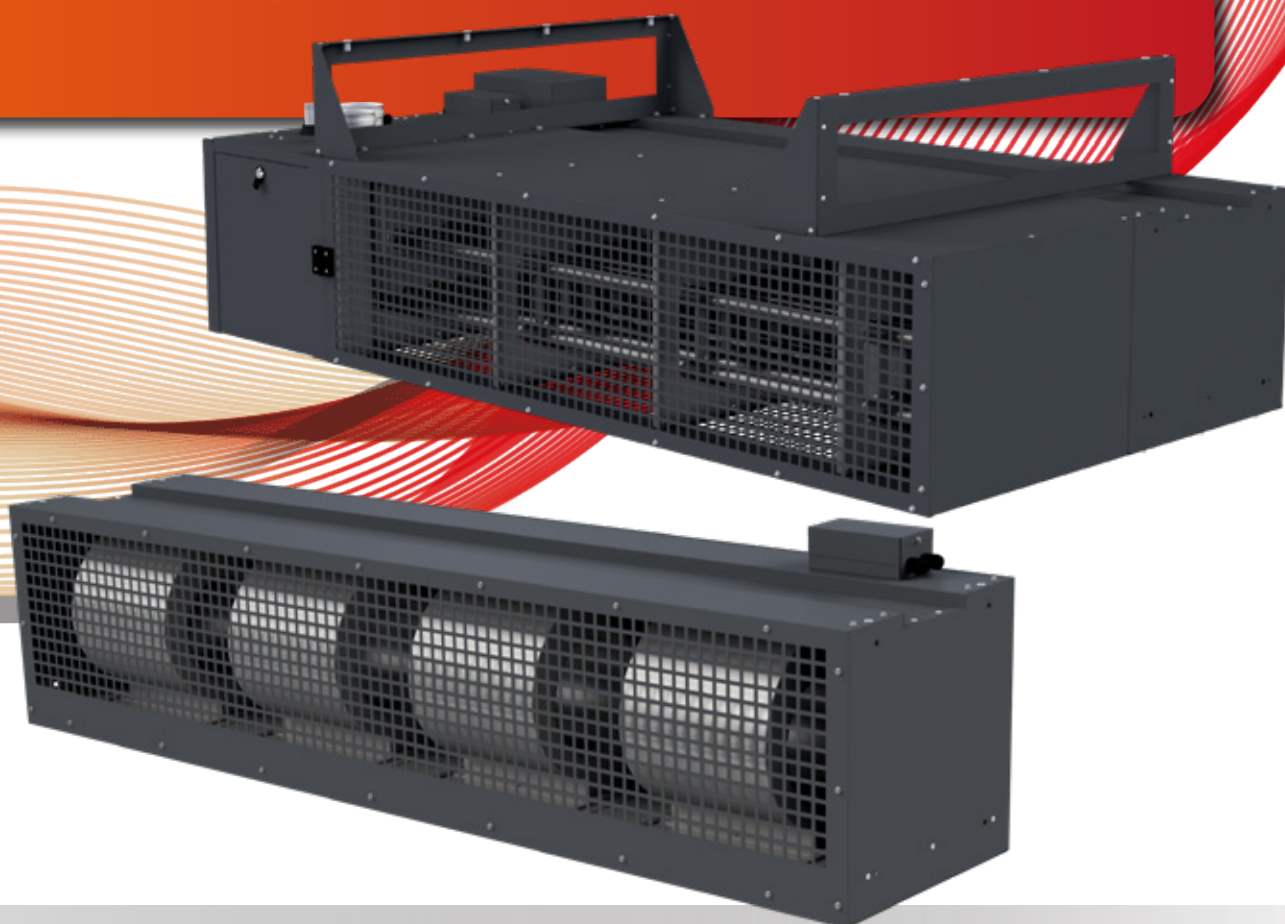


Range of high velocity heated gas fired and ambient electric industrial and commercial door air curtains providing comfort and/or heat to eliminate drafts and ingress of air borne particles.

The Door Curtain Range from Powrmatic.

Door Curtains

Ambient Gas Fired & Electric Baratherm
Gas Fired Options / Electric



New For 2021

Door Curtains Ambient Gas F



Product Benefits



**REDUCES BUILDING
ENERGY COSTS**



**PREVENT
HEAT LOSS**



**ADAPTABLE
INSTALLATION**



**IMPROVES
WORKFORCE COMFORT**



**REDUCE INGRESS OF
AIR BOURNE CONTAMINANTS
AND INSECTS**

Powrmatic's range of ambient and heated electric/gas fired door curtain range are designed provide an effective solution to energy loss and draughts adjacent to loading doors.

Powrmatic Gas Fired Air Curtains units are fitted with centrifugal fans that force the air out through the downward facing exit slot that has directional louvres fitted. Horizontal high level mounted Baratherm has the additional advantage of recycling stratified warm air back to occupancy level to help break up any layer of cold air that has entered the building

Door curtains provides a solution; it produces a targeted high velocity air stream across the door to significantly reduce the amount of warm air escaping and cold air entering.

Effective High Velocity Flexible

The Door Curtain Range
from Powrmatic.

Models Available

Ambient:

- BAR3/16a
- BAR4/21a

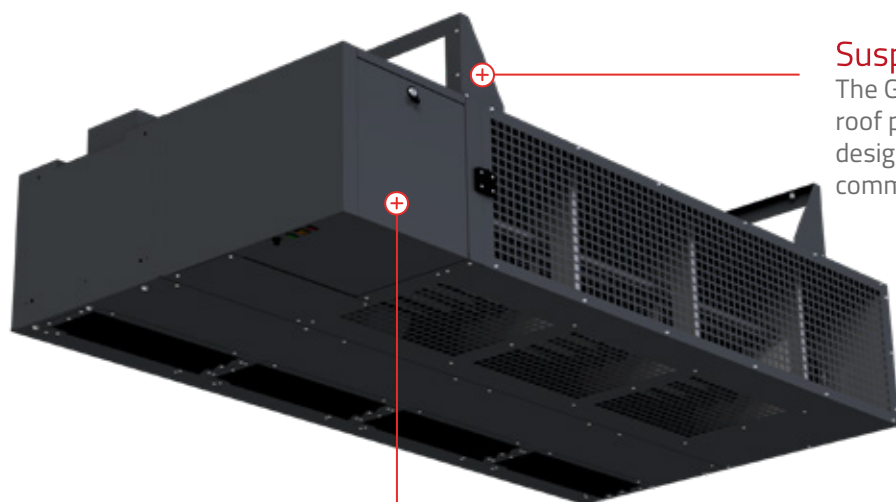
Heated:

- BAR3/GFAC
- BAR4/GFAC

Fired & Electric Range



Product Features (GFAC)



Suspension

The GFAC unit is designed to be suspended from suitable roof points or alternatively to be mounted on purpose designed brackets and are intended primarily for commercial or industrial premises.

In-shot Burners

Multi in-shot burners matched to each tube assembly and manifolded to a common gas valve and ignition system, itself complete with flame monitoring and safety controls and supplied ready for use with natural gas (G20). Alternative LPG propane (G31) firing available.

Installation Flexibility

The GFAC can be installed horizontally above the doorway or vertically (Ambient only) to one side. They can be used for environmental separation on cold stores, preventing flies entering food factories through open doorways.

Flue Options

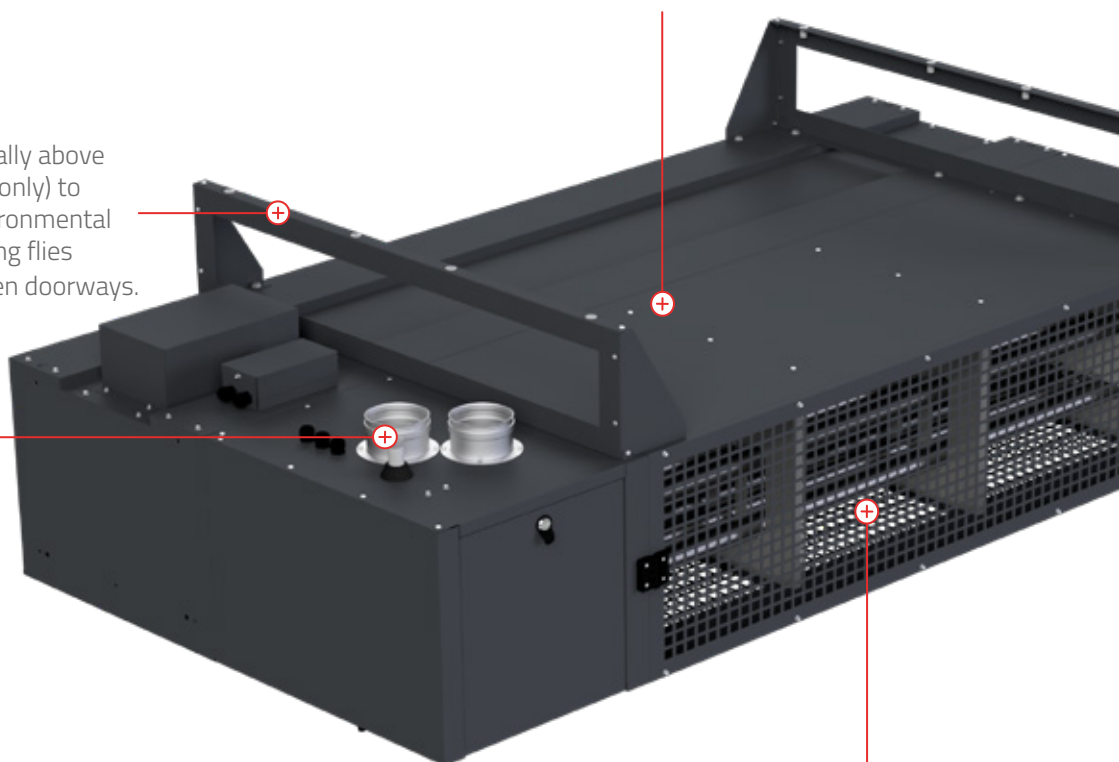
Suitable for single wall or balanced flue installations



Approvals
All GFAC units are CE approved.

Construction

Constructed from epoxy powder coated steel, housing a specifically designed low inertia fan deck to ensure long life and lowest energy usage. Paint finish is RAL 7015 which is stove hardened to compliment Powrmatic Warm air and Radiant ranges, other BS and RAL colours available as an option, additional cost on request.



Heat Exchanger Options

A two pass tubular assembly manufactured from aluminised steel formed, swaged, and expanded without recourse to stress induced welding, AISI 409 and 316 grade stainless steel options available

Technical Specification

GFAC

Model			Gas Fired	
			BAR3/GFAC	BAR4/GFAC
Output (nominal)	High Fire (max)	kW	36.5	54.0
	Low Fire (min)	kW	24.2	40.4
Input (nett CV)	High Fire (max)	kW	40.0	58.9
	Low Fire (min)	kW	27.2	44.0
Airflow Volume	High Speed	m³/h	8100	10800
	Med Speed	m³/h	4500	6000
	Low Speed	m³/h	3000	4000
Electrics	Supply	V/ph/Hz	230V 50Hz 1Ph	
	Start	amp	21.0	28.0
	Run	amp	12.0	16.0
Fuel	Connection		BSP/Rc	¾"
	Nominal Inlet Pressure		mbar	20.0
	Consumption		m³/h	4.23 6.2
Mounting Height		Min	m	2.0 2.0
Overall Dims	Height		mm	466* 466*
	Width		mm	1750 2250
	Depth		mm	1150 1150
Install Clearance	Top		mm	200
	Front (air inlet)		mm	1000
	Sides		mm	25
	Rear		mm	n/a
Flue	Diameter		mm Ø	100
	Max Length	Flue Only	m	7m + 2x90° Elbows
		Room Sealed	m	7m + 2x90° Elbows
Combustion Air Spigot			mm Ø	100
Qty of fans				3 4
Noise Levels			dB(A)	72 72
Nett Weight			kg	
Model			BAR3/GFAC	BAR4/GFAC

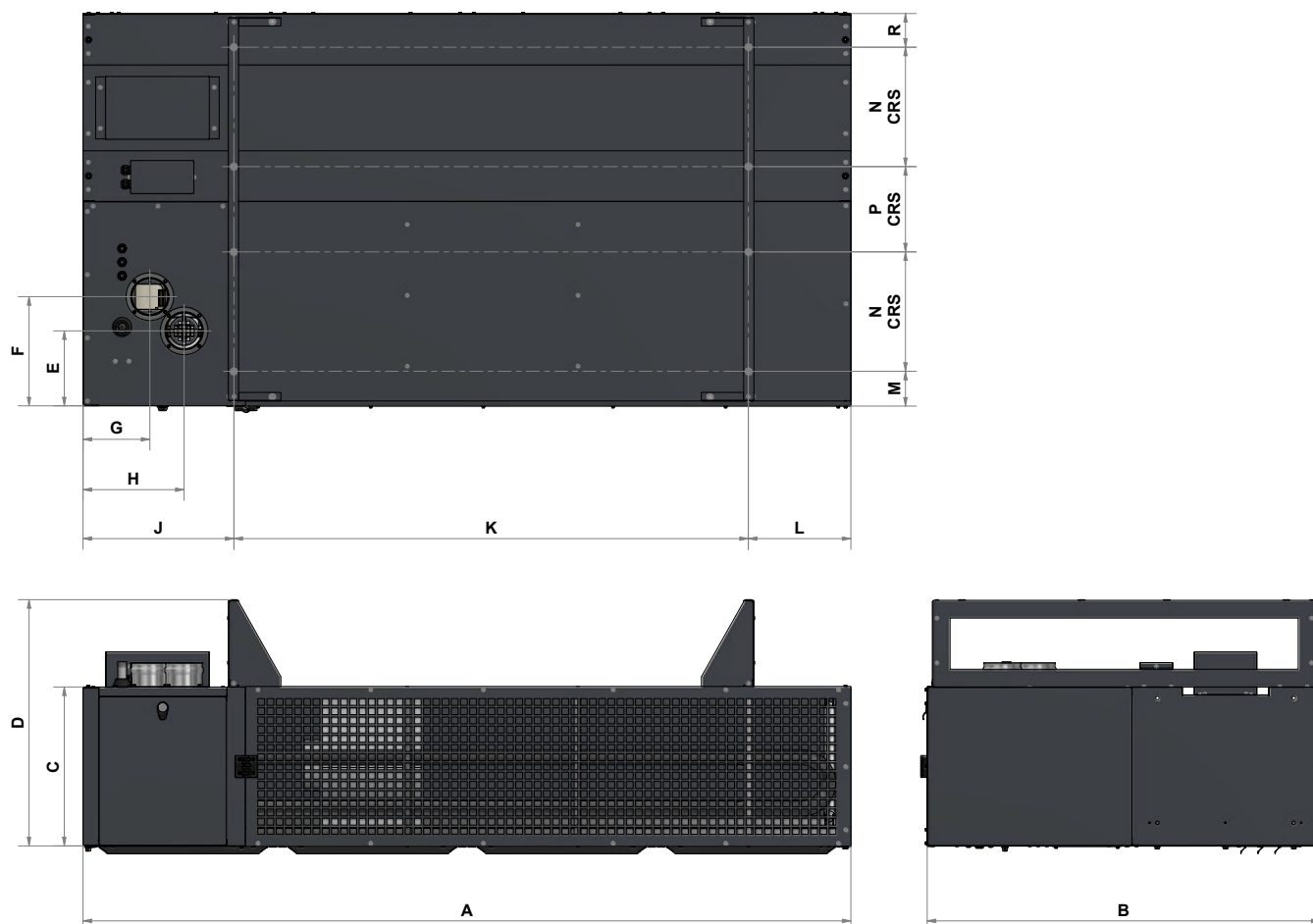
Notes:

Fuel Consumption and input figures based upon nett calorific values as follows: -

Natural Gas (G20) nett CV 34.02 MJ/m³

- Gas fired air curtains have efficiency levels which meet with the minimum heater efficiency requirements of UK Part L Building Regulations.
- Standard heaters configured as High/Low.
- Air handling data is assessed at room ambient conditions
- Noise levels are measured 5m from appliance in a free field.

- Motor kW, run and start amps apply to standard electrical supply as stated. For optional data contact sales office.
- It is the responsibility of the installing contractor to ensure that any additional ducting is correctly sized and balanced when installing units.
- * Not including bracketry



Model		BAR3/GFAC	BAR4/GFAC
A	mm	1750	2250
B	mm	1150	1150
C	mm	466	
D	mm	720	
E	mm	127	220
F	mm	269	320
G	mm	228.5	196
H	mm	228.5	296
J	mm	442	
K	mm	1007.4	1507.5
L	mm	300.5	
M	mm	102	
N	mm	350	
P	mm	250	
R	mm	98	

Door Curtains Ambient Electric

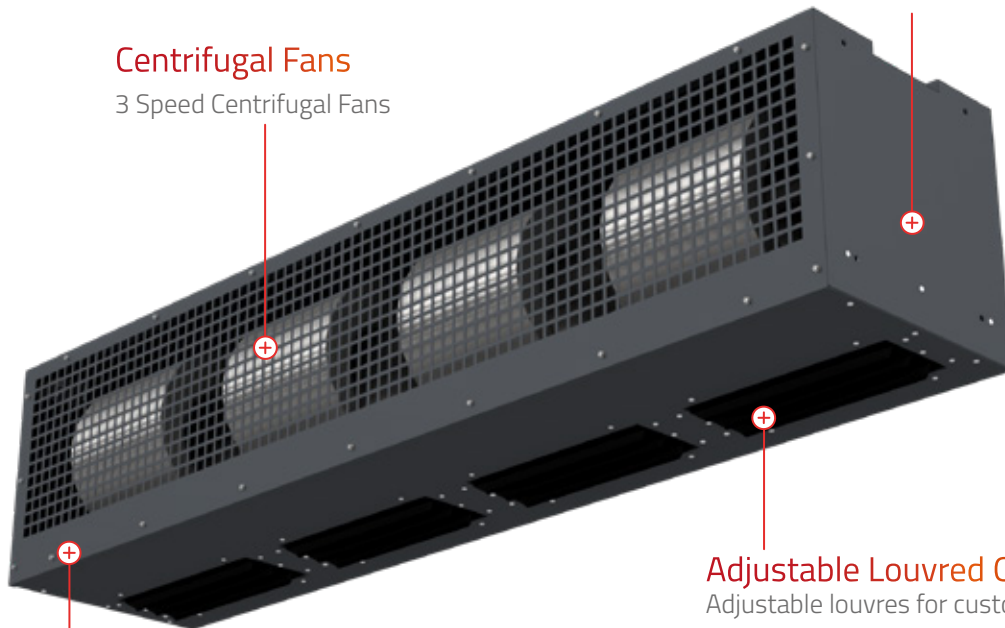
Product Features (Electric)

Construction

Constructed from epoxy powder coated steel, housing a specifically designed low inertia fan deck to ensure long life and lowest energy usage. Paint finish is RAL 7015 which is stove hardened to compliment Powrmatic Warm air and Radiant ranges, other BS and RAL colours available as an option, additional cost on request.

Centrifugal Fans

3 Speed Centrifugal Fans



Adjustable Louvred Outlets

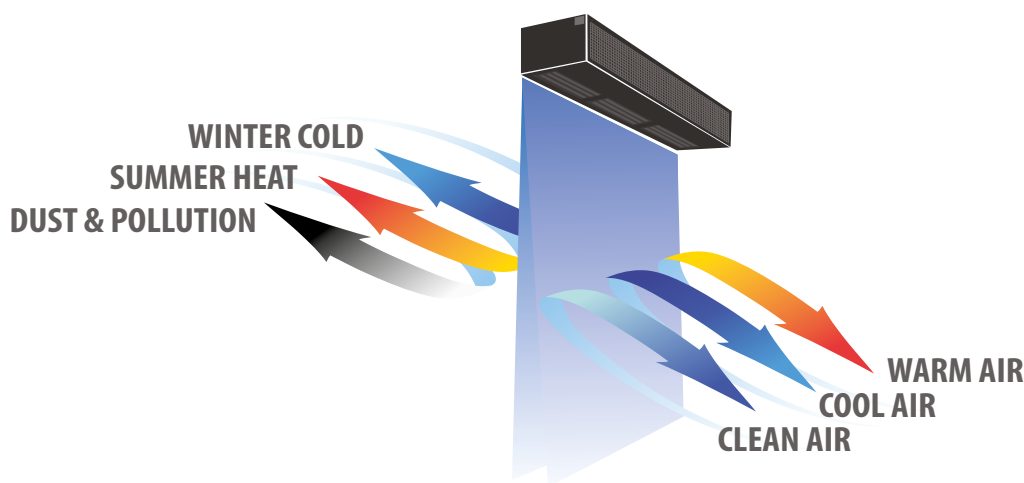
Adjustable louvres for custom air flow direction

Installation Flexibility

The Ambient Baratherm can be installed horizontally above the doorway or vertically (Ambient only) to one side. They can be used for environmental separation on cold stores, preventing flies entering food factories through open doorways.

Approvals

All Baratherms are CE approved.



How Door Curtains Work?

When doors are opened, warm, heated air exits the building through the top of the opening whilst cold air enters through the lower part. The results are large amounts of heat being lost, draughts and the formation of colder air layers at low level, resulting in an unhappy workforce.

The cold air layer at occupancy level can be difficult to penetrate due to its different density to the warm air from space heater units.

Electric Baratherm Door Curtain

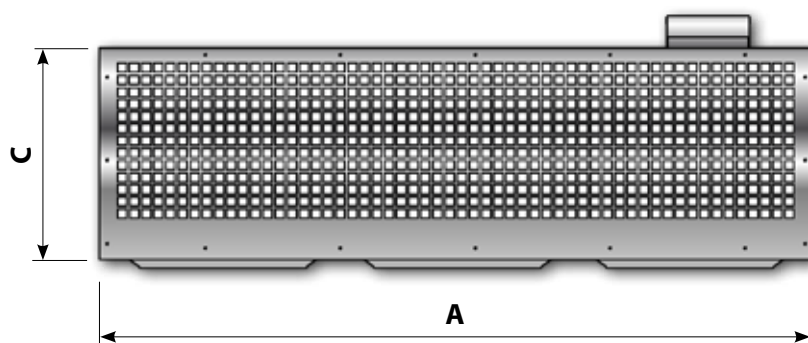
Technical Specification

Baratherm

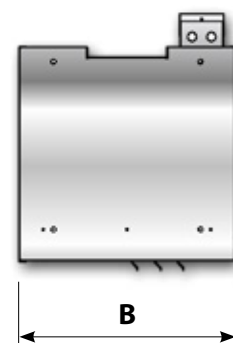
Model		BAR3/16A	BAR4/21A
Average Outlet Velocity	m/s	15.3	15.3
Air Flow Volume	m ³ /h	7000	9300
Electrical Supply		230V 50hZ	
Start Amps	A	30.0	37.0
Run Amps	A	11.6	14.6
Quantity of fans		3	4
Weight	Kg	80	103

Dimensions

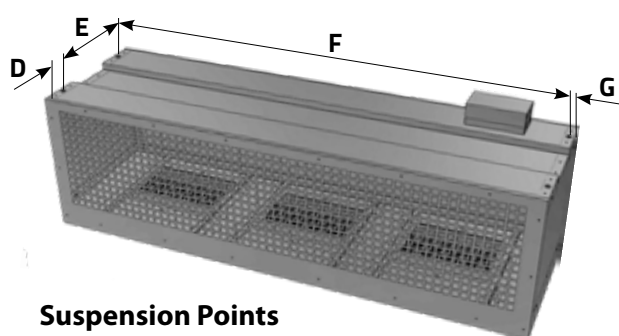
Baratherm



Front View



End View



Suspension Points

Model	Dimensions (mm)						
	A	B	C	D	E	F	G
BAR3/16A	1750	550	466	76	400	16	1718
BAR4/21A	2250	550	466	76	400	16	2218

About Us

Powrmatic design, develop and deliver HVAC solutions worldwide across a wide range of commercial and industrial applications creating comfortable and safe environments, differentiated through innovation, integrity, compliance and service.

Our specialised HVAC divisions:

Heating

Industrial and commercial warm air and radiant space heating solutions manufactured to achieve efficient performance, compliance and reliability for every application in partnership with the HVAC trade.

Ventilation

Custom designed highly efficient, cost-effective smoke, natural and powered ventilators manufactured to meet project requirements of building operators, architects, specifiers and contractors.

Air Conditioning

Worldwide distributors of innovative wall mounted heat pumps air conditioner technology providing efficient comfort cooling and heating all year round.

Engineered Products

Bespoke heating and ventilation solutions designed to serve individual customers specific project requirements. In addition our OEM products provide partner AHU manufacturers with high quality energy efficient gas fired heat exchangers.

Contact Us

Powrmatic Limited
Hort Bridge, Ilminster
Somerset
TA19 9PS
tel: **+44 (0) 1460 53535**
fax: **+44 (0) 1460 52341**
e-mail: **info@powrmatic.co.uk**



#keepingthenationwarm

Powrmatic Ireland
45 Broomhill Close
Tallaght
Dublin 24
tel: **+353 (0) 1452 1533**
fax: **+353 (0) 1452 1764**
e-mail: **info@powrmatic.ie**



Powrmatic pursues a policy of continuous improvement in both design and performance of its products and therefore reserves the right to change, amend or vary specifications without notice. Whilst the details contained herein are believed to be correct they do not form the basis of any contract and interested parties should contact the Company to confirm whether any material alterations have been made since publication of this brochure.