

TB133

Applies to models:

Opensky Roof Vents



Opensky

Instructions for site fixing of
Roof Vent c/w Turndown Base



General Information

The Roof Opensky is an attractive, economical low profile louvred ventilator which has been specifically designed for both smoke and heat exhaust and natural ventilation applications.

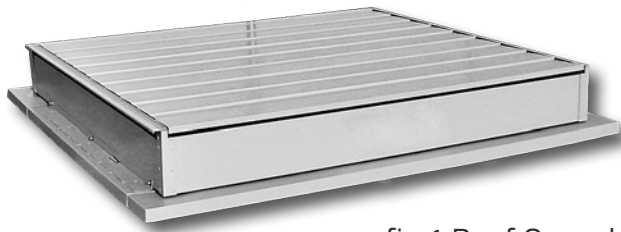


fig.1 Roof Opensky

The ventilator is supplied in two parts to facilitate easy installation on site, the base assembly and louvre box assembly.

The base types and applications are as follows:

- Turndown Base - mounting onto weathered roof upstand
- Flat Base - mounting directly onto roof sheeting
- Glazing Base - integrating into glazing systems

This bulletin describes the on-site installation procedure when using a Turndown Base unit.

Tools and Parts Required



Drill and Bits



Pop Riveter

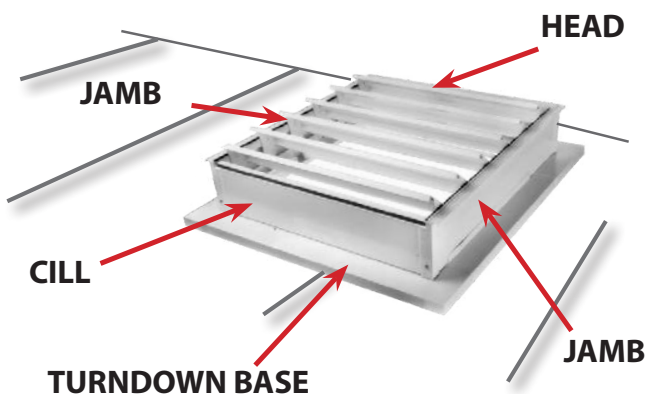


Sealing Tape

- 1 x Roof Opensky
- Qty x M6 x 20mm Hex Bolts
- Qty x M6 Washers
- Technical bulletin (TB133)

Procedure

Identification



TP600 sealing tape or equal around the top of the upstand.



Note: Sealant tape must be compatible with the roof construction.

Locate any burglar bars / personal guards / insect mesh / bird guards etc. (where necessary) prior to fitting the Opensky Vent.

3. Carefully seat turndown base onto the roof upstand and fix using weatherproof fixings at a maximum of 400mm apart.

Procedure

1. Ensure the roof upstand is flat and clear of debris.
2. Apply a continuous twin strip of Illbruck



Notes: Positioning angles located at Head and Jamb only. Cut-outs on the positioning angles MUST be located towards the HEAD end of the Vent body.

TURNDOWN BASE UNIT
(note position of cut-outs)



4. Offer Vent body on to turndown base and position between positioning angles.

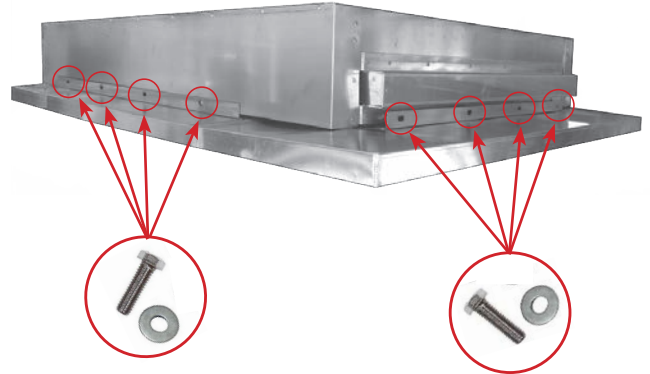


Note: Vent Head to be at the up-slope end of the vent.



IMPORTANT Do not use any silicone/ mastic between the base and the Opensky Vent body.

5. Secure Opensky Vent with M6 x 20mm screws and washers through Ø12 slots located at 200 ctrs along positioning angles into nutserts in vent body.



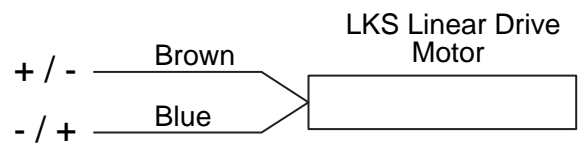
Note: Ensure there is a minimum of 5mm clearance at Cill for the drainage slot at the down slope end of the vent.



Note: If fitting an optional Windshield, refer to technical bulletin TB123.

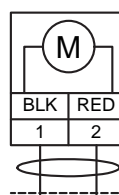
Wiring Diagrams

OSREN (BS-EN 12101:Pt 2 2003)
Aumüller LKS - Drive Open/Closed

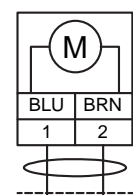


To reverse motor swap the + / - supplies

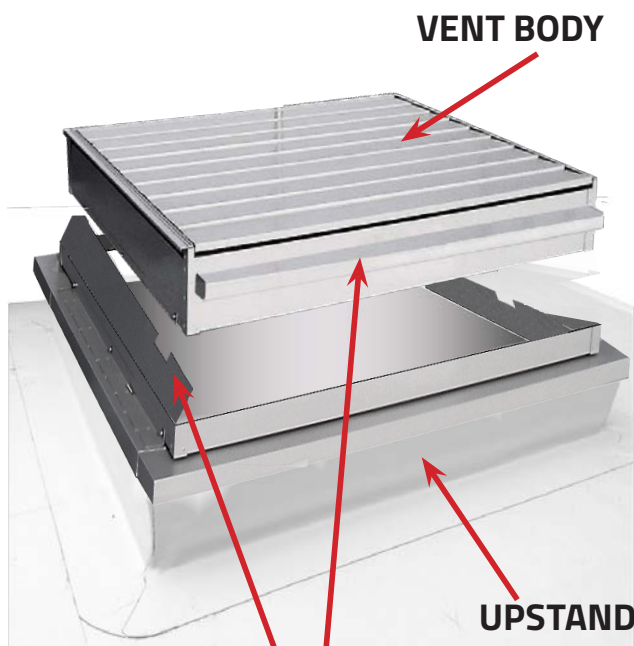
OSR (BS-7346 Pt1:1990) Option
Johnson Controls - ON/OFF Spring Return



⊥ ~ AC24V 50/60Hz
- + DC24V ±10%

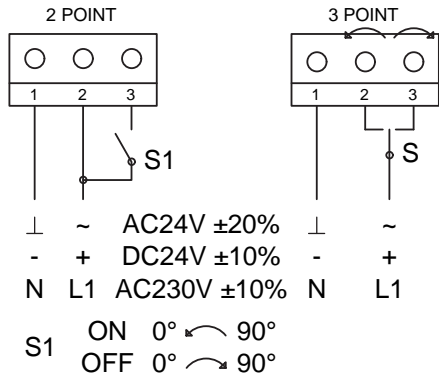


N L1
AC230V 50/60Hz

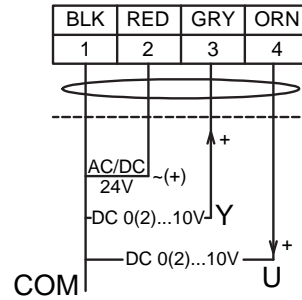


NOTE Position of the HEAD END relative to the cut outs in the TURNDOWN BASE UNIT

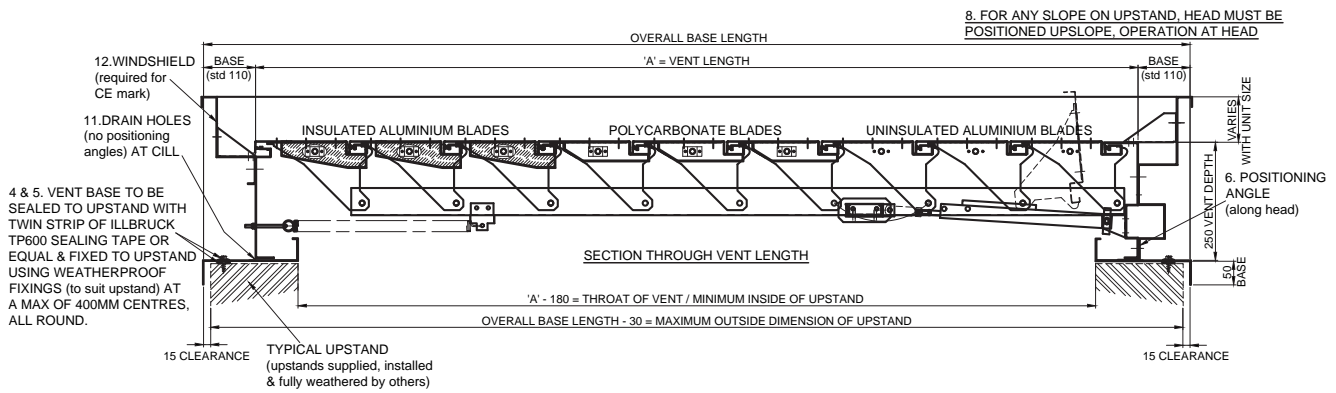
OSR (BS-7346 Pt1:1990) Option
Johnson Controls - Drive Open/Closed



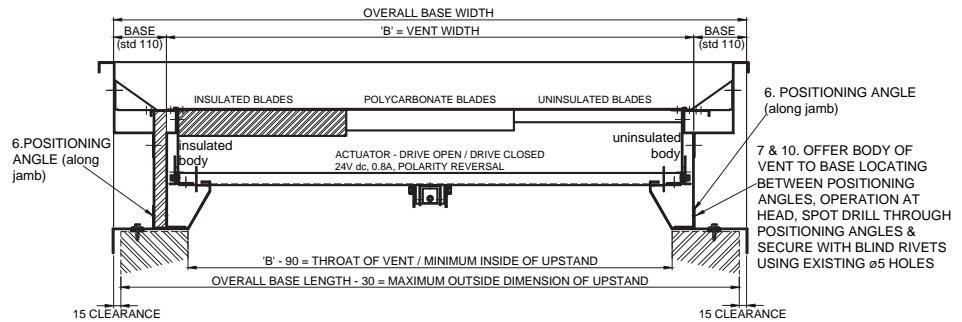
OSR (BS-7346 Pt1:1990) Option
Johnson Controls - Modulation Spring Return



Section through vent length



Section through vent width



Powrmatic pursues a policy of continuous improvement in both design and performance of its products and therefore reserves the right to change, amend or vary specifications without notice. Whilst the details contained herein are believed to be correct they do not form the basis of any contract and interested parties should contact the Company to confirm whether any material alterations have been made since publication of this brochure.