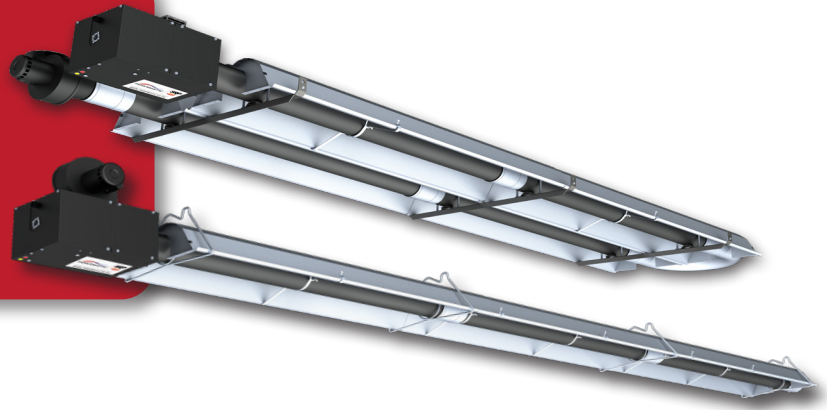


Radiant Heaters

Vacuum / Forced U-Tube & Linear Range
Natural Gas & LPG Fired Options



Overview

SRP, Superior Radiant Products from Powrmatic feature optimal comfort and energy savings with two stage burner technology as standard, Two stage high/low allows for fast warm up and recovery on high fire and maximum energy savings with steady state low fire.

The range comprises, U tube, Single Linear, Double Linear and combined flue "Herringbone" models. With Both Forced and Vacuum burner technology is available to give the greatest choice to installers.

Models Available

- PL- Linear Forced Burner
- PU- U Tube Forced Burner
- PVL - Linear Vacuum Burner
- PVU - U Tube Vacuum Burner
- PVDL -Double Linear Vacuum Burner
- PVL HB -Linear Vacuum Burner Combined Flue
- PVUHB - U Tube Vacuum Burner Combined Flue

Product Features

- A wide range of burner types with kW input capacities from 11kW through to 61kW at high fire
- High/Low, two stage vacuum or forced burners as standard giving installers the flexibility and choice in replacement or new build markets.
- Galvanised suspension brackets give horizontal and angle mounting single point suspension points
- Forced burner options help reduce interconnecting wiring with single linear types
- Highly efficient bright, low weight ASTM 1100 aluminium reflectors
- Heaters are designed for horizontal or angle mounting when required to suit the installation.
- Models are designed to use single wall 100 or 130 dia flue system.
- Burner lockout indication along with LPG fuel, sports guards and deep side skirts are available on request.

Specification

- Burner will be supplied as standard with High-Low control compatibility
- Emitter tubes will be manufactured from heat treated, calorised aluminised steel to eliminate flaking and maximise efficiency. Twist locking emitter tube turbulators
- Heaters can be fuelled with G20 Natural Gas or G31 LPG with an injector change.
- Burner will be either Induced vacuum or blown types to give design flexibility
- A combined flue herringbone system will be custom designed to minimise roof and wall flues utilising a single vacuum exhaust fan discharging the exhaust of up to 200kW system.
- Powrmatic SRP Radiant heaters will be controlled by MC200 Energy saver controller with a remote black bulb temperature sensor to give and accurate radiant temperature control. HB systems will be supplied with a local fan relay unit in addition to the standard controls.
- Powrmatic radiant heaters will be fully type tested and CE approved. All efficiencies will meet January 2019 ErP Lot 20 directive.
- Suspension Brackets will be constructed from galvanised formed and welded bar to give long life, the required emitter tube expansion and contraction support with single point suspension for linear type heaters

Technical Performance

PL & PU (Powrmatic Forced Burner Linear & U-Tube)

Model			PL (Linear)							PU (U-Tube)				
			10	20LS	20	30	40	50	60	20US	20	30	40	50
Heat Input (Natural Gas)	High Fire	kW (gross)	11	22	22	30	43.5	52.5	61	22	22	30	43.5	52.5
	Low Fire	kW (gross)	8.5	17	17	23	32	40	44.5	17	17	23	32	40
Heat Input (Propane LPG)	High Fire	kW (gross)	10.5	21.5	21.5	29.5	40	N/A		21.5	21.5	29.5	40	N/A
	Low Fire	kW (gross)	8.5	16.5	16.5	23	31	N/A		16.5	16.5	23	31	N/A
NOx Seasonal (Gross)		mg/kWh	109	116	114	117	127	128	132	116	114	117	127	128
Seasonal Space Heating Energy Efficiency		% hs,h	82.9	76.0	83.3	81.0	80.2	82.1	80.0	77.3	84.1	80.9	80.4	80.5
Gas Connection		BSP/Rc	½"					* ½"		½"				
Supply Pressure		mbar	Nat Gas - 20 / Propane - 37							Nat Gas - 20 / Propane - 37				
Electrics		V/ph/Hz	230/1/50							230/1/50				
Minimum Gas Flow Rate	m³/h	Nat Gas	0.85	1.64	1.64	2.22	3.07	3.81	4.23	1.64	1.64	2.17	3.07	3.81
		LPG	0.31	0.61	0.61	0.86	1.12	N/A		0.61	0.61	0.86	1.12	N/A
Maximum Gas Flow Rate	m³/h	Nat Gas	1.06	2.11	2.11	2.85	4.12	5.02	5.82	2.11	2.11	2.85	4.12	5.02
		LPG	0.41	0.80	0.80	1.10	1.49	N/A		0.80	0.80	1.10	1.49	N/A
Flue Diameter		mm	100							100				
Air Inlet Connection		mm	100							100				
Recommended Mounting Heights		m	2.5	3.0	3.0	4.0	5.0	5.5	6.5	3.0	3.0	4.0	5.0	5.5

PVL, PVU & PVDL (Powrmatic Vacuum Burner Linear, U-Tube & Double Linear)

Model			PVL (Vacuum Linear)					PVU (Vacuum U-Tube)						
			20LS	20	30	40	50	20US	20	30	40	50		
Heat Input (Natural Gas)	High Fire	kW (gross)	22	22	30.5	41	53	22	22	30.5	41	53		
	Low Fire	kW (gross)	17.5	17.5	25	32.5	41	17.5	17.5	25	32.5	41		
Heat Input (Propane LPG)	High Fire	kW (gross)	22	22	30	38	N/A	22	22	30	38	N/A		
	Low Fire	kW (gross)	17	17	23.5	29.5	N/A	17	17	23.5	29.5	N/A		
NOx Seasonal (Gross)		mg/kWh	125	125	121	118	113	125	125	121	118	113		
Seasonal Space Heating Energy Efficiency		% hs,h	77.4	77.4	82.0	82.6	83.6	77.5	77.5	83.7	81.1	79.5		
Gas Connection		BSP/Rc	½"					* ½"		½"				
Supply Pressure		mbar	Nat Gas - 20 / Propane - 37							Nat Gas - 20 / Propane - 37				
Electrics		V/ph/Hz	230/1/50							230/1/50				
Minimum Gas Flow Rate	m³/h	Nat Gas	1.64	1.64	2.38	3.07	3.91	1.64	1.64	2.38	3.07	3.91		
		LPG	0.63	0.63	0.90	1.10	N/A	0.63	0.63	0.90	1.10	N/A		
Maximum Gas Flow Rate	m³/h	Nat Gas	2.11	2.11	2.91	3.91	5.02	2.11	2.11	2.91	3.91	5.02		
		LPG	0.80	0.80	1.10	1.49	N/A	0.80	0.80	1.10	1.49	N/A		
Flue Diameter		mm	PVL - 100 / PVDL - 130							PVU - 100 / PVDU - 130				
Air Inlet Connection		mm	100							100				
Recommended Mounting Heights		m	3.0	3.0	4.0	5.0	5.5	3.0	3.0	4.0	5.0	5.5		

For PVDL (Powrmatic Vacuum Double Linear) units the heat input and maximum gas flow rate are doubled)

* **Important Note:** For full technical specification notes please refer to the product installation manual on our website at www.powrmatic.co.uk

Powrmatic Limited
Hort Bridge, Ilminster
Somerset
TA19 9PS

tel: **+44 (0) 1460 53535**

fax: **+44 (0) 1460 52341**

e-mail: **info@powrmatic.co.uk**



#keepingthenationwarm

Powrmatic Ireland
45 Broomhill Close
Tallaght
Dublin 24

tel: **+353 (0) 1452 1533**

fax: **+353 (0) 1452 1764**

e-mail: **info@powrmatic.ie**