

TB133

Applies to models:

Opensky Roof Vents



Instruction for site fixing of Opensky Roof Vent c/w Turndown Base



General Information

The Roof Opensky is an attractive, economical low profile louvred ventilator which has been specifically designed for both smoke and heat exhaust and natural ventilation applications.

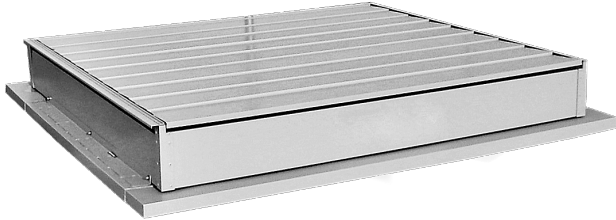


fig.1 Roof Opensky

The ventilator is supplied in two parts to facilitate easy installation on site, the base assembly and louvre box assembly.

The base types and applications are as follows:

- Turndown Base - mounting onto weathered roof upstand
- Flat Base - mounting directly onto roof sheeting
- Glazing Base - integrating into glazing systems

This bulletin describes the on-site installation procedure when using a Turndown Base unit.

Tools and Parts Required



Drill and Bits

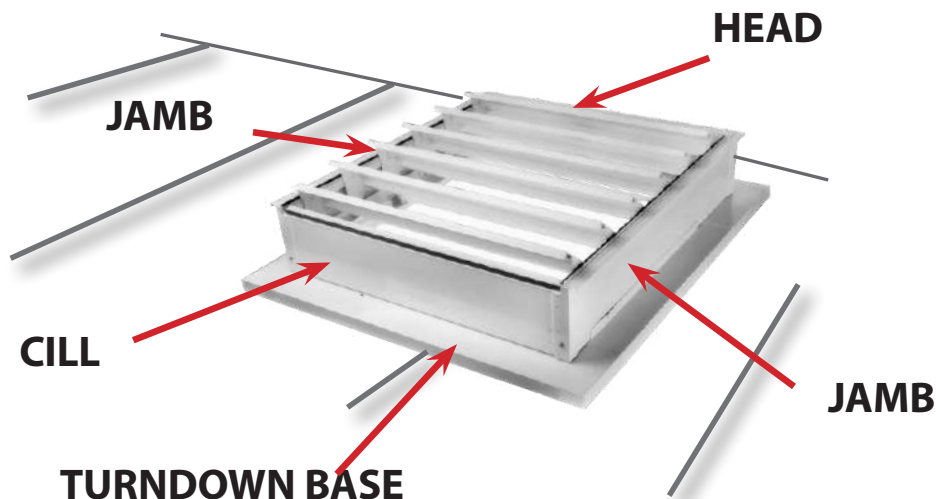


10mm Spanner

- 1 x Roof Opensky
- Qty x M6 x 20mm Hex Bolts
- Qty x M6 Washers
- Technical bulletin (TB133)

Procedure

Identification of Parts



Procedure

1. Ensure the roof upstand is flat and clear of debris.
2. Apply a continuous twin bead of silicone/mastic around the top of the upstand.



Note: (Silicone/mastic must be compatible with the roof construction.)

Locate any burglar bars / personal guards / insect mesh / bird guards etc. (where necessary) prior to fitting the Opensky Vent.

3. Carefully seat turndown base onto the roof upstand and fix using weatherproof fixings (supplied by others) at approx. 300mm apart.



Notes: Positioning angles located at Head and Jamb only. Cut-outs on the positioning angles **MUST** be located towards the **HEAD** end of the Vent body.

TURNDOWN BASE UNIT (note position of cut-outs)



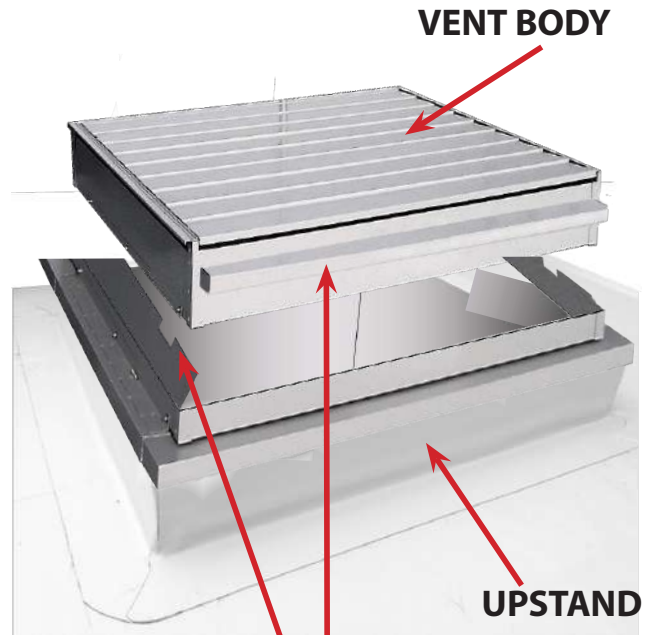
4. Offer Vent body on to turndown base and position between positioning angles.



Note: Vent Head to be at the up-slope end of the vent.

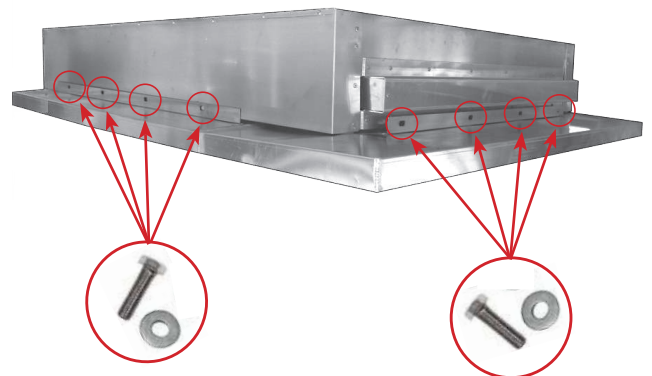


IMPORTANT Do not use any silicone/mastic between the base and the Opensky Vent body.



NOTE Position of the **HEAD END** relative to the cut outs in the **TURNDOWN BASE UNIT**

5. Secure Opensky Vent with M6 x 20mm screws and washers through Ø12 slots located at 200 ctrs along positioning angles into nutserts in vent body.

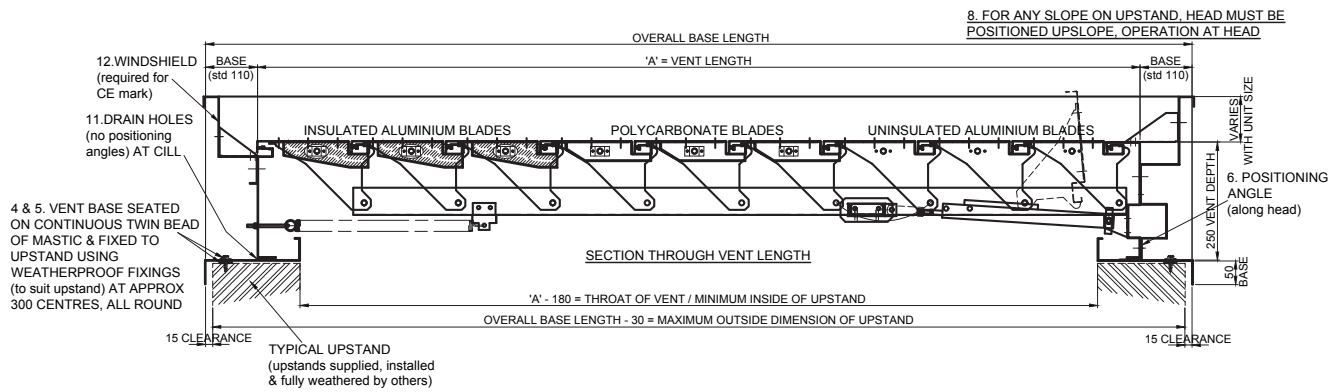


Note: Ensure there is a minimum of 5mm clearance at Cill for the drainage slot at the down slope end of the vent.

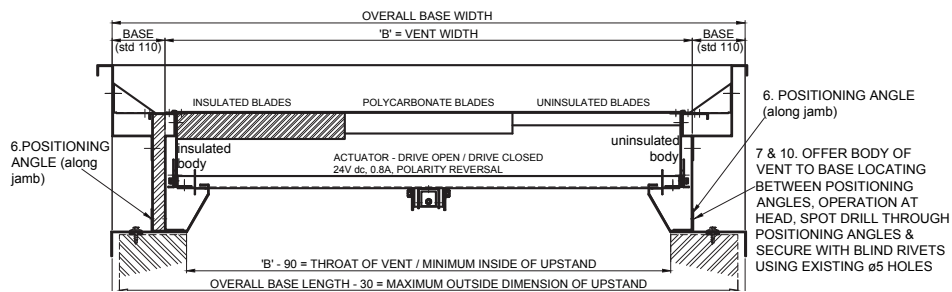
If fitting an optional Windshield, refer to technical bulletin TB123.

Roof Opensky c/w Turndown Base

Section through Vent length



Section through Vent width



VENT DIVISION
 Hort Bridge
 Ilminster, Somerset TA19 9PS
 Tel: 01460 53535
 Fax: 01460 52341



Every effort is made to ensure accuracy at time of going to press. However as part of continued product improvement, we reserve the right to alter specification without prior notice.