

# TB123

Applies to models:

## Opensky Roof Vents



### Instruction for site fixing of Opensky Vent Windshields



## General Information

The Roof Opensky is an attractive, economical low profile louvred ventilator which has been specifically designed for both smoke and heat exhaust and natural ventilation applications.

Where Roof Opensky units are installed in



fig.1 Roof Opensky

naturally draughty areas, a windshield can be added to aid the natural ventilation process.

This bulletin describes the on-site retrofit installation procedure required for this windshield.

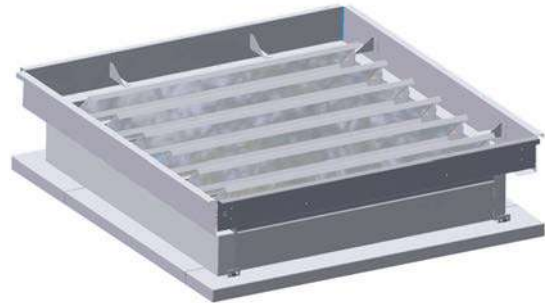


fig.2 Roof Opensky with Windshields

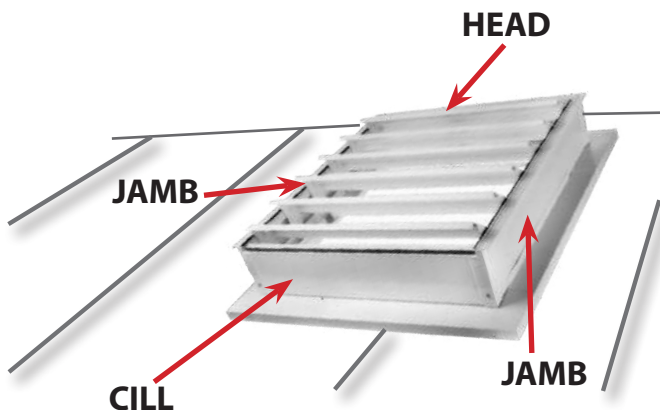
## Tools and Parts Required



2 x Jamb windshield including pre-assembled webs.  
1 x Head windshield including pre-assembled webs.  
1 x Cill windshield including pre-assembled webs.  
qty of Ø4.8mm dome head rivets  
Technical bulletin (TB123)

## Procedure

### Identification



### NOTES:

All windshields and brackets are punched with identification marks:

- "J" for Jamb
- "C" for Cill
- "H" for Head

All windshields are supplied complete with pre-assembled fixing webs.

All fixings are via Ø4.8 rivets which are supplied with the windshields.

## Procedure

1. Position Cill Windshield central to the cill on the vent and level with the Jamb Windshields.



2. Using the windshield as a template, drill Ø5.5 holes through the holes down the length of the Cill Windshield as well as the pre-drilled brackets.



3. Fix the Cill Windshield to the Vent Opensky with the 5mm pop rivets supplied.



4. Position the first Jamb Windshield central to the jamb on the vent.



5. Using the windshield as a template, drill Ø5.5 holes through the holes down the length of the Jamb Windshield as well as the pre-drilled brackets.

6. Fix the Jamb Windshield to the Vent Opensky with the 5mm pop rivets supplied.



7. Repeat for the second Jamb windshield.

8. Position Head Windshield central to the head on the vent.



9. Using the windshield as a template, drill Ø5.5 holes through the holes down the length of the Head Windshield as well as the pre-drilled brackets.

10. Fix the Head Windshield to the Vent Opensky with the 5mm pop rivets supplied.

11. Rivet Birdguard\* to top edge of windshield into punched holes.

*\* if supplied*



VENT DIVISION  
Hort Bridge  
Ilminster, Somerset TA19 9PS  
Tel: 01460 53535  
Fax: 01460 52341



Every effort is made to ensure accuracy at time of going to press. However as part of continued product improvement, we reserve the right to alter specification without prior notice.