

TB112

Applies to models:

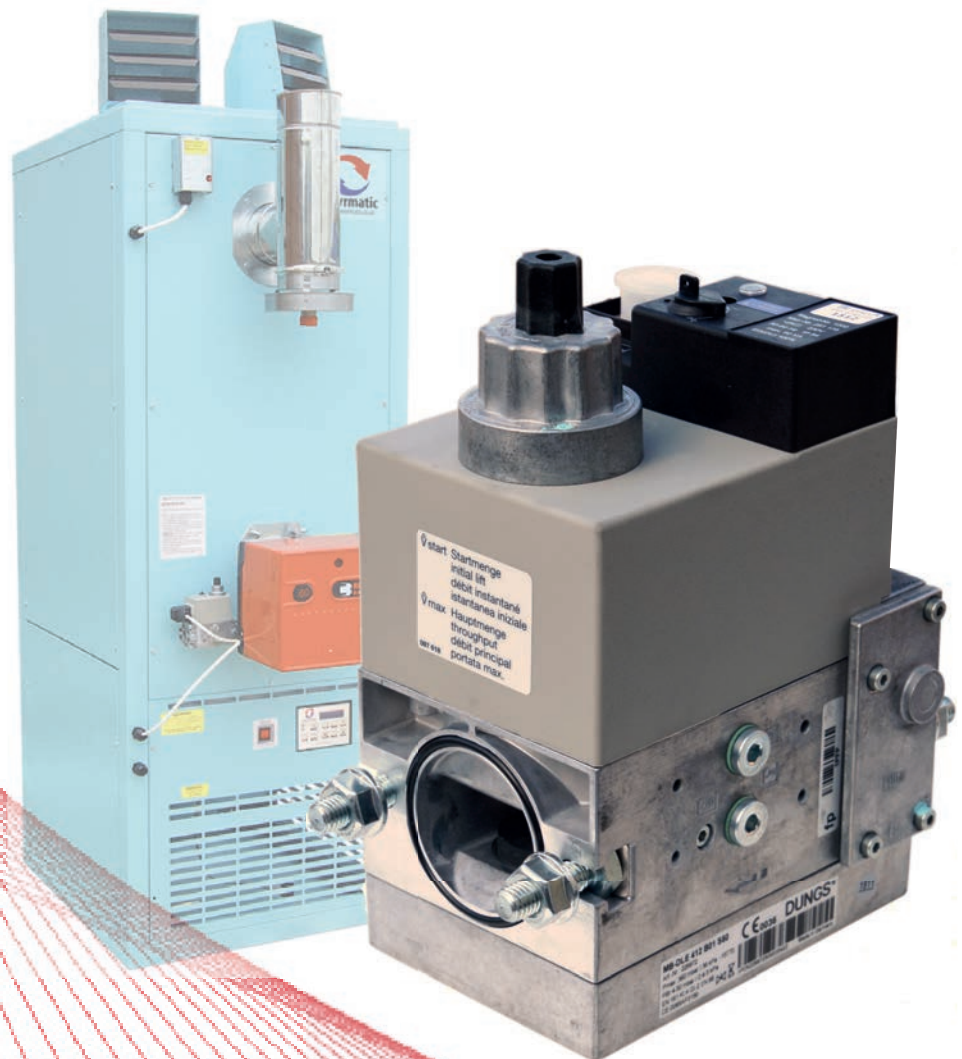
CPx, CP, CAG

Issue 1.1 March 2017



www.powrmatic.co.uk

Instruction for setting up of the Dungs MB-DLE Gas Valve



Dungs MB-DLE B01 gas valve set up.

Check wires to the gas valve.

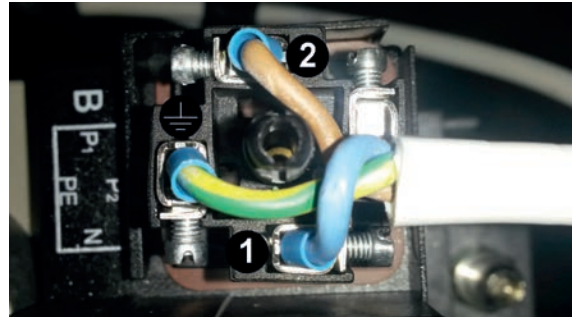
The 4 pin DIN plug numbering is:

pin 1 **BLUE CABLE** = Neutral

pin 2 **BROWN CABLE** = Main gas

pin3 = *NOT USED*

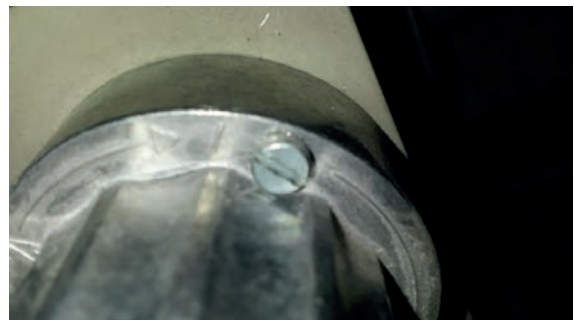
Earth pin = **GREEN/YELLOW CABLE**



- Open pivot cover and rotate pressure adjustment screw fully clockwise (+ positive).
- Rotate screw anticlockwise (- negative) 8 full turns (this is a very fine thread).



- Slacken fixing screw on main aluminium volume regulator (not the painted screw!)



- Rotate regulator fully clockwise (- negative).
- Turn anticlockwise back 1/3 turn.
- Start heater.
- If burner fails to light, increase regulator in 1/3 increments (MAX 2 complete turns!)
- Adjust main volume regulator to give 0.2mbar above the stated gas pressure.
- Lock down screw.



- Check burner pressure at burner test point.



- Adjust pressure adjustment screw under pivot cover to give corrected gas pressure. (this is a very fine thread).



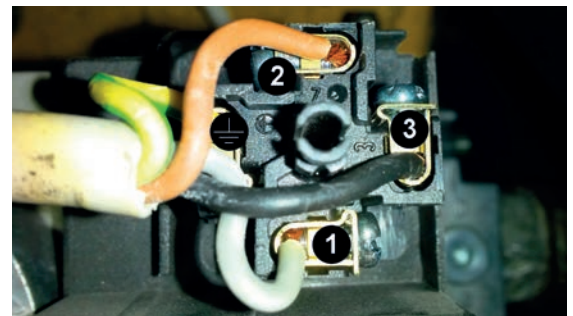
Procedure: sizes 120 - 300 (CP400 - 1000)

Dungs MB-DLE B07 gas valve set up.

Check wires to the gas valve.

The 4 pin DIN plug numbering is:

- pin 1 **GREY CABLE** = Neutral
- pin 2 **BROWN CABLE** = Start gas
- pin 3 **BLACK CABLE** = Main gas
- Earth pin = **GREEN/YELLOW CABLE**

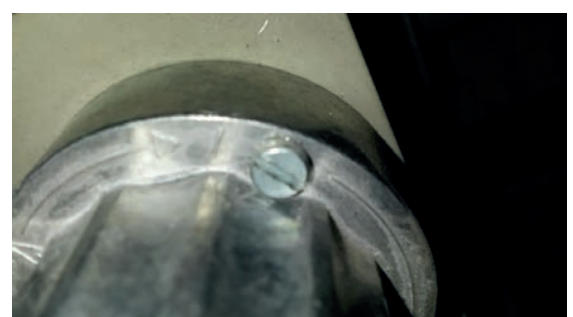


- Open pivot cover and rotate pressure adjustment screw fully clockwise (+ positive).
- Rotate screw anticlockwise (- negative) 8 full turns (this is a very fine thread).
- Start gas screw located on the side of the gas valve.
- Unscrew dust cap.
- Rotate screw fully anti-clockwise (+ positive).
- Replace dust cap.
- Remove cover underneath Closed Position Indicator (CPI) switch.
- Rotate setting screw to '+' until switching point is reached.
- Rotate screw by a further scale division.
- Replace cover

Note: If CPI is not activated, burner will not fire. Indicated on controller by 5 flashes.



- Slacken fixing screw on main aluminium volume regulator (not the painted screw!)



- Rotate regulator fully clockwise (- negative).
- Turn anticlockwise back 1/3 turn.
- Start heater.
- Adjust main volume regulator to give 0.2mbar above the stated gas pressure.
- Lock down screw.



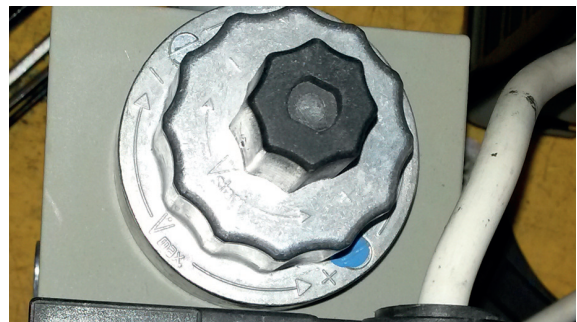
- Check burner pressure at burner test point.



- Adjust pressure adjustment screw under pivot cover to give corrected gas pressure. (this is a very fine thread).
- Check operation of valve



Note: Adjuster under black cap on top of main aluminium volume regulator may need to be re-adjusted to avoid vibration.



If burner still fails to go for start-up, check for:

a) Burner lockout. b) Check Fuse. c) Adjustment of CPI on size 120 (CP400) and above.

If burner remains at low fire on 120 (CP400) and above, don't assume gas valve adjustment - Check if **GREY** and **BROWN** cables are correct to valve.



HEATING DIVISION
 Hort Bridge
 Ilminster, Somerset TA19 9PS
 Tel: 01460 53535
 Fax: 01460 52341



Every effort is made to ensure accuracy at time of going to press. However as part of continued product improvement, we reserve the right to alter specification without prior notice.