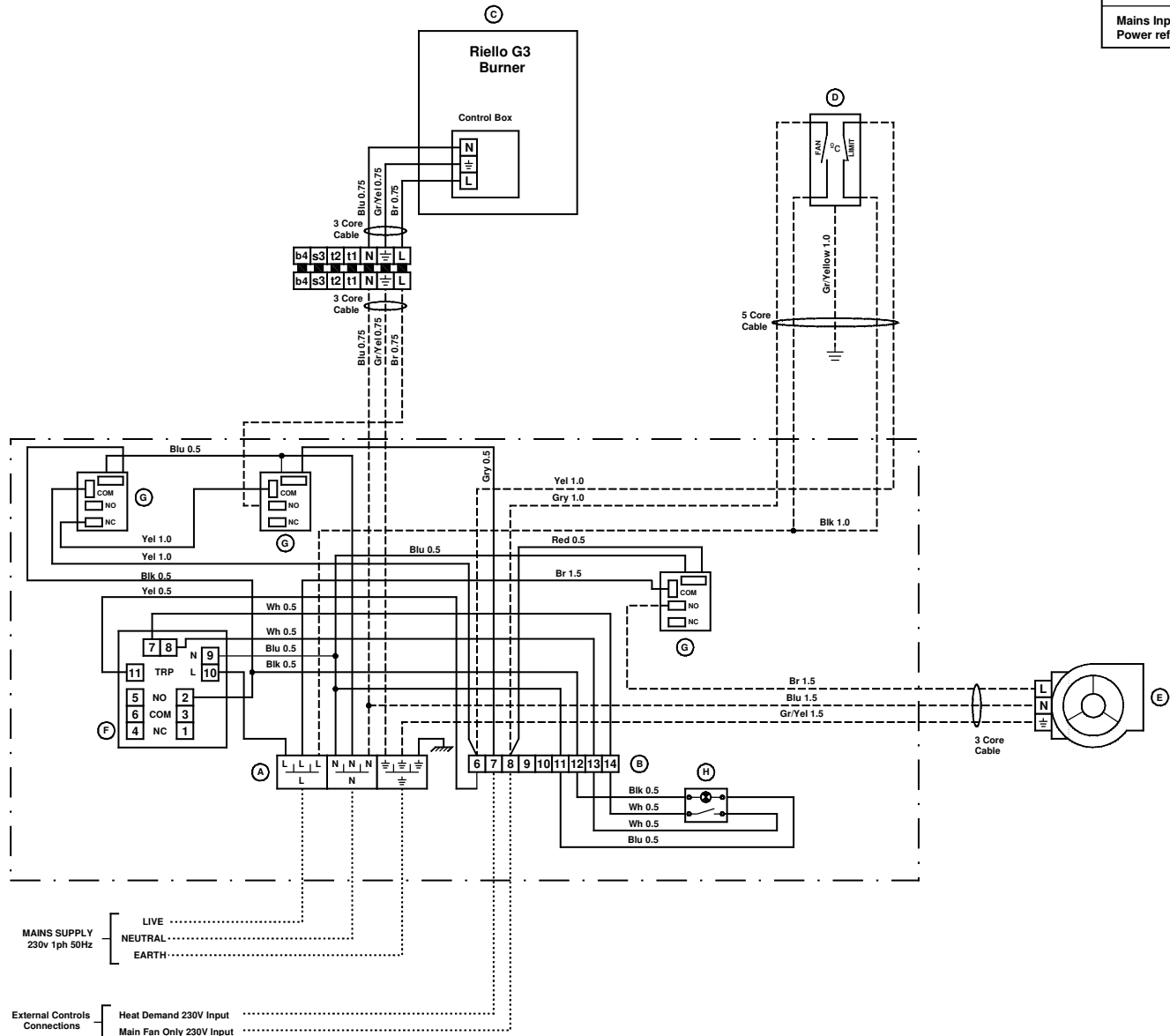
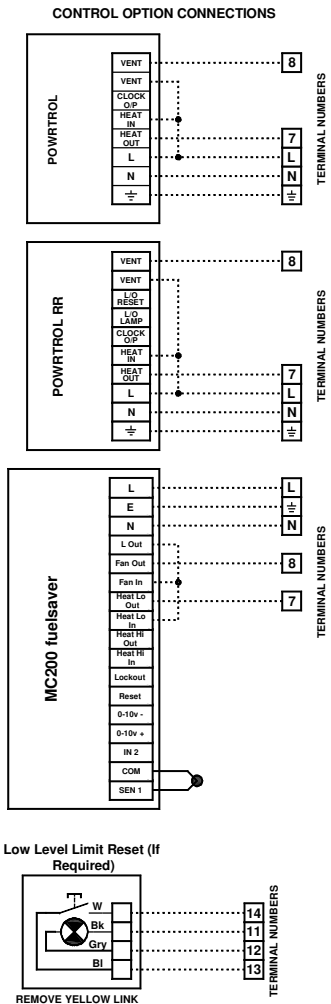


Electrical Data
Mains Input: 230v 50Hz 1ph Supply. For total Power refer to user instructions.



COMPONENT LIST (powrmatic part number)		
A	3 Way Hylec Block	143100603
B	Terminal Block	143100563
C	Riello Burner	Model Specific
D	Honeywell Fan/Limit Stat	143000306
E	Main Fan	Model Specific
F	Interface Board	142403600/3
G	30A Jox Relay	143000816
H	Limit Indicator / Reset	143070274

Wiring Legend	
	Connections made by Control board Assembler
	Connections made by Final Assembler
	Connections made by Installer

POWRMATIC LTD		TITLE:		
Powrmatic Ltd - Horn Bridge, Ilminster, Somerset TA19 9PS TEL: 01460 53535 FAX: 01460 52341 Web: www.powrmatic.co.uk E-Mail: rtd@powrmatic.co.uk		OUH 20 Centrifugal		
JMC 8092	9140	13.05.14	MkIII Limit Interface Board Added	3
JMC 7601	-	14.01.13	MkII Limit Interface Board Added	2
DRN	IA/NC	DGR	DATE	MODIFICATIONS
				ISSUE

DRG NO:	OUH C / 001-01
---------	----------------